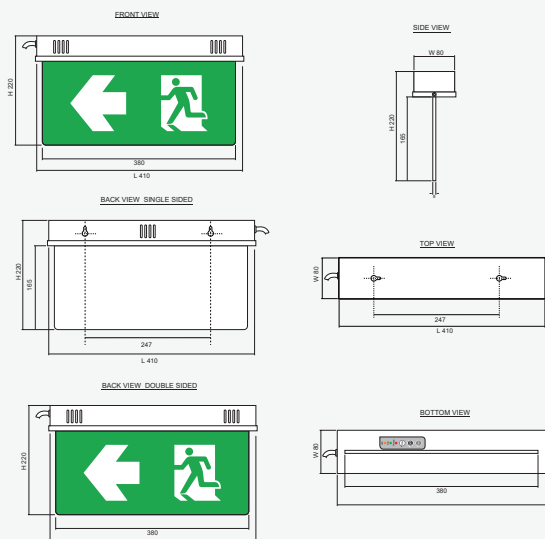




### Technical Specifications

|                            |  |
|----------------------------|--|
| Mode of Operation          | Maintained   |
| Input Voltage              | 220 VAC / 50Hz $\pm$ 10%   |
| LED Lamp Power             | 10W  |
| LED Color Temperature      | 6,500k - 7,000k  |
| Battery Type / Capacity    | Nickel Metal Hydride<br>1,800 mAh (1.2V x 3)                           |
| Charge Current (max)       | 0.180A   |
| Charge Termination Voltage | 1.4V/Cell  |
| Charging Time              | 12 Hrs   |
| Protections                | - AC, DC Fuse<br>- Battery Low Voltage Cut-Off                         |
| Testing System             | Manual Testing   |
| Backup Time                | 2.0 Hrs  |
| Housing                    | Electro-galvanized steel sheet 1mm.<br>thick with epoxy powder coating |
| Dimensions (LxWxH)         | 410 x 80 x 220 mm  |
| Weight                     | 1.70 Kg / Single sided<br>1.70 Kg / Double sided                       |
| IP Rating                  | 20   |
| Mounting                   | Surface Ceiling (Type C) / Wall (Type W)                               |
| Viewing Distance           | 24 M (Pictogram Height 10 CM)  |

### Dimensions (mm)



### Product Overview

The SLS1-10LED (Single sided / Double sided) emergency exit sign can be ceiling mounted and surface mounted.

The LEDs used for illumination are SMD low Power High Lumen type. It uses SMT technology that consumes 6 times less electricity than those using fluorescent bulbs with 7 times longer operational life. The quality and brightness of illumination is also certified by the Thai Industrial Standard 2430-2552 and Thailand Engineering Standard 021004-18.

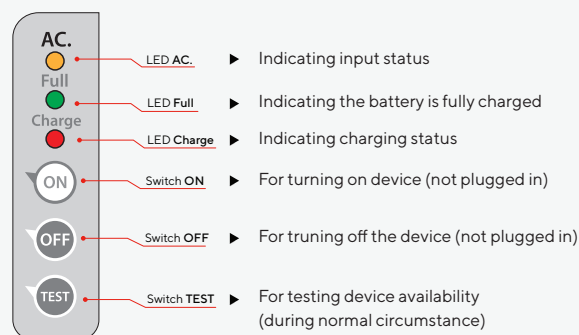
The unit uses Ni-MH (Nickel Metal Hydride) batteries that are smaller but more efficient. The sign is made with clear acrylic sheet that evenly diffuses the light throughout the whole sign, even after an extended period of use.

The chassis is made with 1 mm. thick Electro-Galvanized steel sheets coated with Epoxy powder and stove enameled to help protect from any possible rust.

### Features

- Uses high power LEDs rated at 10 Watts for illumination
- Having LED lifetime of over 50,000 hours
- Operate for 2.0 hours on backup time
- Automatically recharged with constant voltage and limited current
- Battery overcharge protection circuit prevents overcharge which is the cause of battery swelling
- Battery discharge protection circuit prolongs the battery life

### Indicators



### Installation

